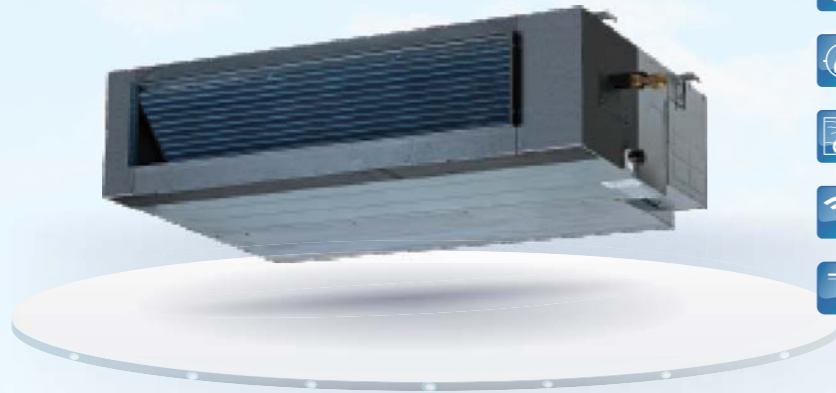
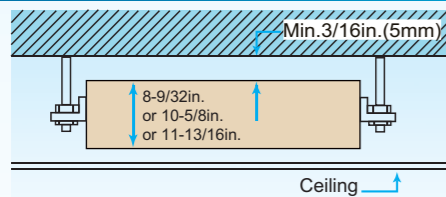


Concealed Duct Unit (A5 Type)



- Auto Restart
- Fresh Air
- Follow Me
- Anti-Cold Air Function
- Built-in Drain Pump
- Wired Controller
- Auto Addressing
- Cleanable Panel
- Connectable To Duct
- Super High Air Flow

Compact size



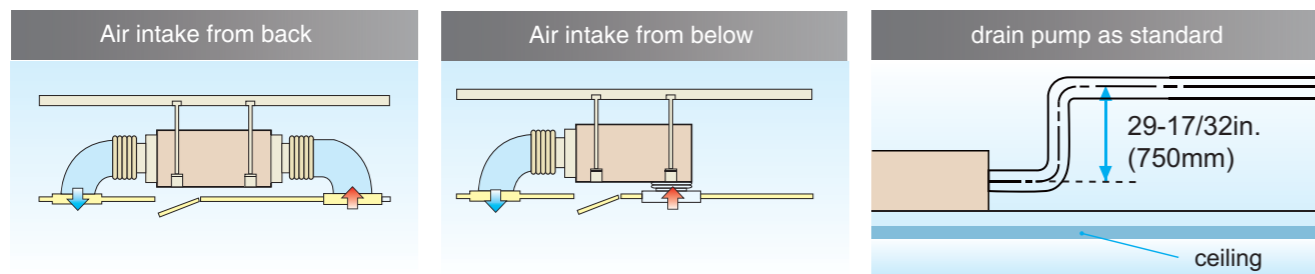
Only 8-9/32in.(210mm) (22~71 models) or 10-5/8in. (270mm) (80 to 112 models) or 11-13/16in.(300mm) (140 model) in height.

External static pressure

Four speed fan motor (Super high speed as an optional)
Change the wiring connection from 'SH' to 'Hi' to change the ESP.

Convenient installation

The EXV is fixed inside of the indoor unit.
Standard filter placed in an aluminum frame, which is removable downward from bottom.
Suction chamber is included as standard equipment.
Fresh air hole, air inlet/outlet flange are standard for easy duct connection.
Air inlet from back is standard and from bottom as optional with the same connectable duct.



Flexible control and convenient for maintenance

Standard Wired remote controller KJR-12B.
The Electrical control box can be removed 1m away from the unit, easy to access when needs maintenance. (Should be required by client in advance and done by Midea CAC in factory).
Standard functional port such as Remote On/Off Dry contact switch and Alarm signal output (220V).

Model		MDV-D22T2/VN1-DA5	MDV-D28T2/VN1-DA5	MDV-D36T2/VN1-DA5	MDV-D45T2/VN1-BA5	MDV-D56T2/VN1-BA5	
Power Supply		208~230V-1Ph-60Hz					
Capacity	Cooling	kW	2.2	2.8	3.6	4.5	5.6
		kcal/h	1,891	2,407	3,095	3,869	4,815
		Btu/h	7,500	9,500	12,200	15,300	19,100
Capacity	Heating	kW	2.6	3.2	4	5	6.3
		kcal/h	2,235	2,751	3,439	4,299	5,416
		Btu/h	8,900	10,900	13,600	17,000	21,500
Power input	Cooling	W	66	72	77	101	100
	Heating	W	66	77	72	101	100
Rated current	Cooling	A	0.28	0.28	0.28	0.5	0.5
	Heating	A	0.28	0.28	0.28	0.5	0.5
Indoor air flow (H/M/L)		m ³ /h	523/443/378	552/443/373	566/481/430	746/558/470	750/563/470
EXP (external static pressure)		Pa	10(10~30)	10(10~30)	10(10~30)	10(10~30)	10(10~30)
Sound Pressure (Hi/Mid/Lo)		dB(A)	36/35/32	37/35/32	39/38/36	41/38.9/36	41/38.9/36
Refrigerant	Type	R410A					
	Control Method	EXV					
Net dimension	W×H×D	in.(mm)	27-9/16×8-17/64×17-23/32(700×210×450)			27-9/16×8-17/64×22-7/16(700×210×570)	36-7/32×8-1/4×22-7/16(920×210×570)
Packing dimension	W×H×D	in.(mm)	34-1/4×11-7/32×20-43/64(870×285×525)			36-1/32×11-27/64×25-25/32(915×290×655)	44-1/16×11-7/16×25-13/16(1,135×290×655)
Net/Gross Weight		lbs.(kg)	38.6/44.1(17.5/20)	38.6/44.1(17.5/20)	38.6/44.1(17.5/20)	59.5/70.5(27/32)	59.5/70.5(27/32)
Piping Connections	Liquid (Flare)	in.(mm)	Φ1/4(Φ6.35)	Φ1/4(Φ6.35)	Φ1/4(Φ6.35)	Φ1/4(Φ6.35)	Φ3/8(Φ9.53)
	Gas (Flare)	in.(mm)	Φ1/2(Φ12.7)	Φ1/2(Φ12.7)	Φ1/2(Φ12.7)	Φ1/2(Φ12.7)	Φ5/8(Φ15.9)
	Drain piping	in.(mm)	OD 1-9/32(Φ32) ID 1(Φ25)	OD 1-9/32(Φ32) ID 1(Φ25)	OD 1-9/32(Φ32) ID 1(Φ25)	OD 1-9/32(Φ32) ID 1(Φ25)	OD 1-9/32(Φ32) ID 1(Φ25)
Standard Controller		Wired controller KJR-12B/DP(T)-E(6 meters connection wire)					

Model		MDV-D71T2/VN1-CA5	MDV-D80T2/VN1-BA5	MDV-D90T2/VN1-BA5	MDV-D112T2/VN1-BA5	MDV-D140T2/VN1-BA5	
Power Supply		208~230V-1Ph-60Hz					
Capacity	Cooling	kW	7.1	8	9	11.2	14
		kcal/h	6,105	6,879	7,739	9,630	12,037
		Btu/h	24,200	27,300	30,700	38,200	47,800
Capacity	Heating	kW	8	9	10	12.5	15.5
		kcal/h	6,879	7,739	8,598	10,748	13,327
		Btu/h	27,300	30,700	34,100	42,600	52,900
Power input	Cooling	W	125	133	134	378	352
	Heating	W	125	133	134	378	352
Rated current	Cooling	A	0.7	1	1	1.8	1.55
	Heating	A	0.7	1	1	1.8	1.55
Indoor air flow (H/M/L)		m ³ /h	998/820/607	1,226/1,018/861	1,230/1,019/859	1,752/1,552/1,389	1,918/1,539/1,250
EXP (external static pressure)		Pa	10(10~30)	20(10~50)	20(10~50)	40(10~80)	40(10~100)
Sound Pressure (Hi/Mid/Lo)		dB(A)	42/40/35	45.4/39.8/37	45.4/39.8/37	48.0/41.9/38	47.7/43.2/39.0
Refrigerant	Type	R410A					
	Control Method	EXV					
Net dimension	W×H×D	in.(mm)	44-7/8×10-5/8×27-61/64(1,140×270×710)			47-1/4×11-13/16×31-1/2(1,200×300×800)	
Packing dimension	W×H×D	in.(mm)	53-11/32×13-25/32×31-19/64(1,355×350×795)			54-9/16×14-3/4×36-1/4(1,385×375×920)	
Net/Gross Weight		lbs.(kg)	70/78.8(31.8/35.8)	88.2/105.8(40/48)	88.2/105.8(40/48)	88.2/105.8(40/48)	108.0/127.9(49/58)
Piping Connections	Liquid (Flare)	in.(mm)	Φ3/8(Φ9.53)	Φ3/8(Φ9.53)	Φ3/8(Φ9.53)	Φ3/8(Φ9.53)	Φ3/8(Φ9.53)
	Gas (Flare)	in.(mm)	Φ5/8(Φ15.9)	Φ5/8(Φ15.9)	Φ5/8(Φ15.9)	Φ5/8(Φ15.9)	Φ5/8(Φ15.9)
	Drain piping	in.(mm)	OD 1-9/32(Φ32) ID 1(Φ25)	OD 1-9/32(Φ32) ID 1(Φ25)	OD 1-9/32(Φ32) ID 1(Φ25)	OD 1-9/32(Φ32) ID 1(Φ25)	OD 1-9/32(Φ32) ID 1(Φ25)
Standard Controller		Wired controller KJR-12B/DP(T)-E(6 meters connection wire)					

Notes:
1. Nominal cooling capacities are based on the following conditions: return air temp. : 80.6°F(27°C)DB,66.2°F(19°C)WB, and outdoor temp. : 95°F(35°C)DB, equivalent ref. piping: 26.25ft. (8m) (horizontal)
2. Nominal heating capacities are based on the following conditions: return air temp. : 68°F(20°C)DB, outdoor temp. : 44.6°F(7°C)DB,42.8°F(6°C)WB, and equivalent ref. piping: 26.25ft. (8m) (horizontal)
3. Sound Level is measured 4.59ft. (1.4m) below the unit.
* external static pressure are based on high speed indoor air flow.
* Specifications are subject to change without prior notice for product improvement.

